

STEEL FABRICATION DIVISION

At Houseman and Falshaw we have a passion for construction and, because of this, we like to offer the fullest service we can.

Our steel fabrication division means that our team can work with you direct to solve your steelwork requirements, whether you need standard materials, specialist design or highly technical bespoke components.

This 8,000 sq ft unit means we can take full advantage of the speed and flexibility that an in-house steel fabrication unit provides. This translates to being able to deliver projects on time and on budget thanks to the fact that we retain control over the process.

It also means that we can design and supply specialist steelwork quickly and efficiently, without being dependent on sub-contractors, with our own team able to meet our customers' needs. This can reduce delivery times from weeks to days.

We understand you need to work with a team which can make decisions, solve problems and who will be accountable for the success of the project.

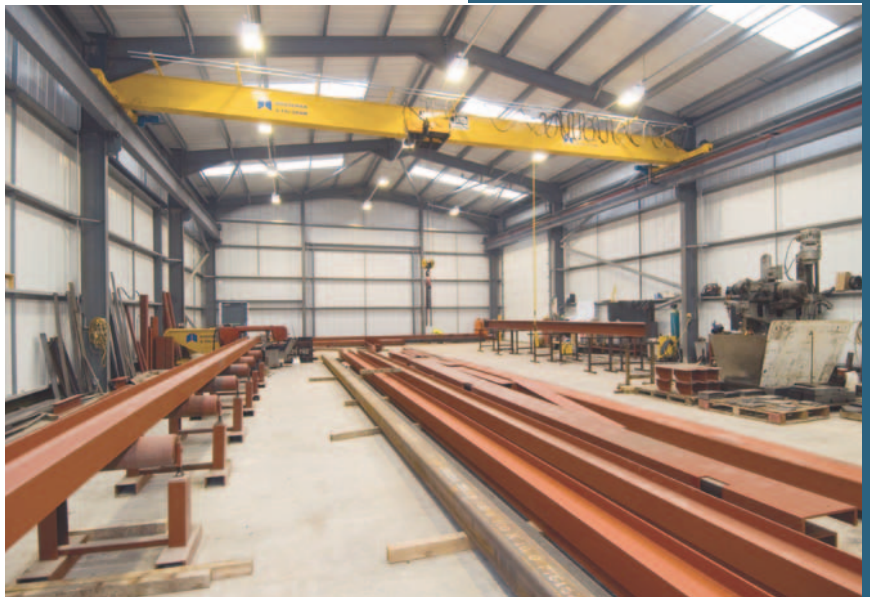
With a substantial proportion of our business received through repeat orders, we are confident that our satisfied customers are testament to our achievement of the highest standards. Houseman and Falshaw will help you to meet your objectives because we know our success depends on it.

Our team has more than 20 years' experience of steel fabrication and we offer:

- ▶ One-off general steel fabrication
- ▶ Plasma cutting facilities
- ▶ Structural steel
- ▶ Bespoke secondary structural steel
- ▶ Mezzanine floors
- ▶ Complete design facilities

Steel from our fabrication unit is being used all over the north, with clients including:

- ▶ JCT 600
- ▶ Britvic Soft Drinks
- ▶ Ridding Park
- ▶ Gregory Properties



Houseman & Falshaw Ltd

Jubilee Court, Copgrove

Harrogate, North Yorkshire HG3 3TB

T: (01423) 340000

F: (01423) 340034

E: enquiries@housemanandfalshaw.co.uk

W: www.housemanandfalshaw.co.uk



HOUSEMAN & FALSHAW